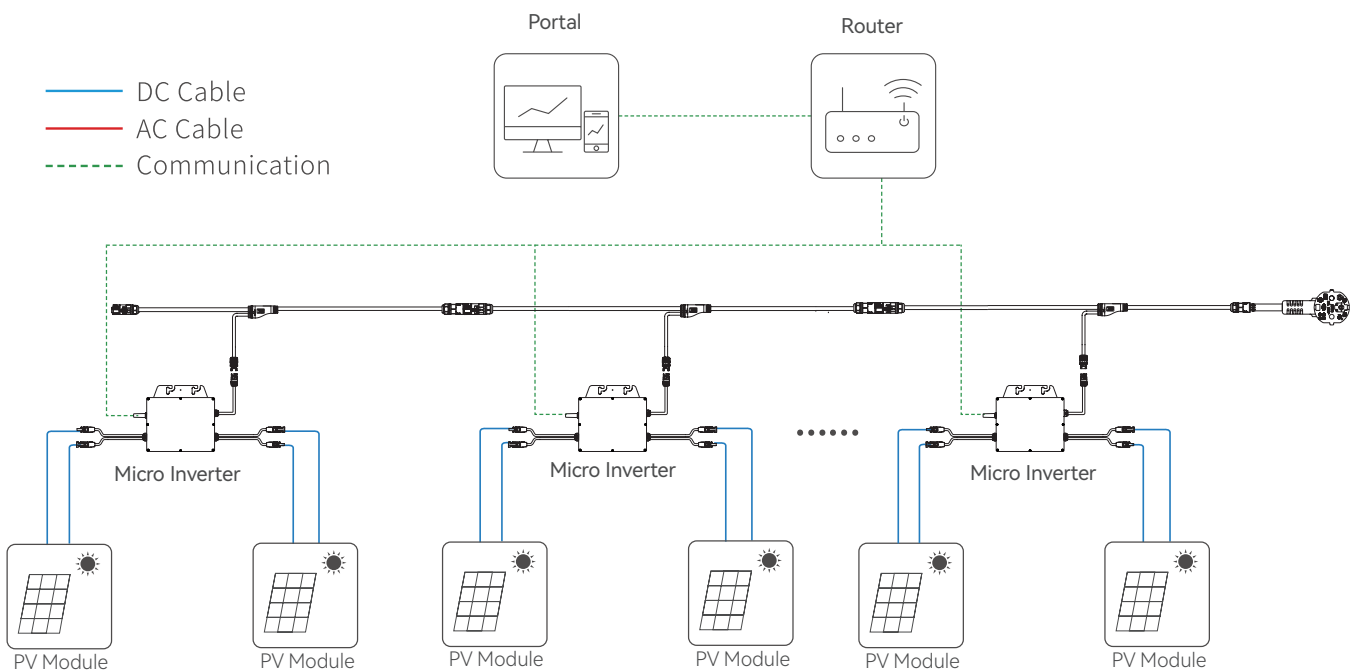
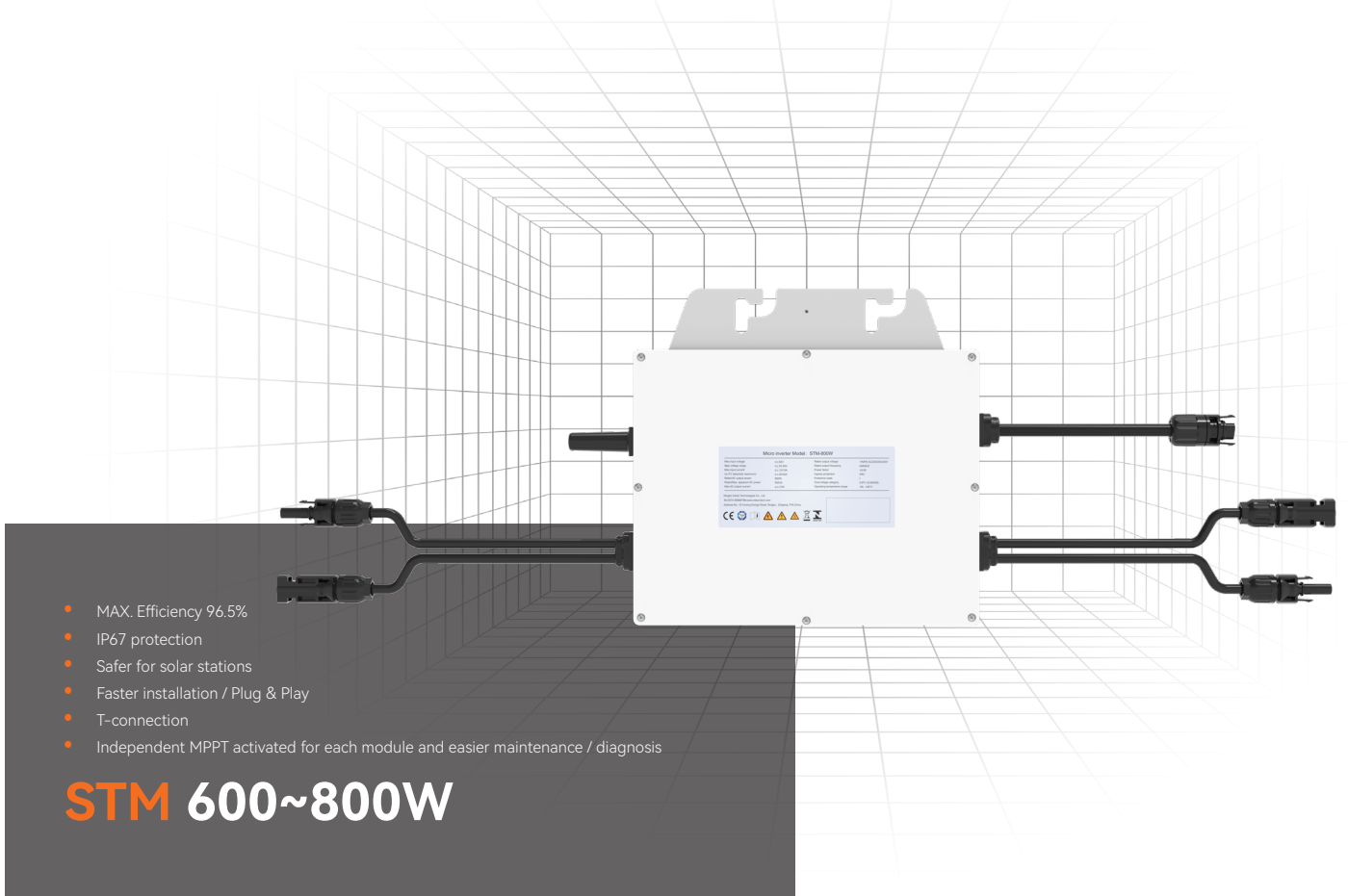


STM Series



Model	STM-600W	STM-800W
PV Input		
Recommended PV Module Power (Wp)	320-450 (2 Piece)	360-550 (2 Piece)
Max. Input Voltage (V)	60	
Start up Voltage (V)	16	
MPPT Voltage Range (V)	25-55	
Max. Input Current (A)	15/15	15/15
Max. Short Current (A)	20/20	20/20
AC Output		
Rated AC power (W)	600	800
Max. /Rated Apparent AC power (VA)	600	800
Rated Grid Voltage (AC Voltage Range) (V)	220/230/240	
Rated Grid Frequency (Hz)	50/60	
Max. AC Output Current (A)	2.70	3.60
Power Factor	>0.999	
Total Harmonic Distortion (THDi@Rated Power)	<3%	
Grid Connection	L/N/PE	
Efficiency		
MPPT Efficiency (%)	>99.9%	
Max. Efficiency (%)	96.50%	
Protection		
Anti-islanding Protection	Integrated	
PV Input Reverse Polarity Protection	Integrated	
Output over Current Protection	Integrated	
Output Short Protection	Integrated	
Over Voltage Protection	DC:II / AC:III	
General Data		
Dimensions [W*H*D] (mm)	226*220*33	
Weight (kg)	2.8	
Noise Emmison (dB)	≤20	
User Interface	LED	
DC Connection Type	MC4	
AC Connection Type	Plug-in connector	
Communication	Wi-Fi	
Cooling Method	Natural convection	
Operating Ambient Temperature Range (°C)	-40°C-- +65°C	
Allowable Relative Humidity Range (%)	0-100	
Max. Operating Altitude (m)	3000 (>3000 derating)	
Protection Degree	IP67	
Climatic Category (IEC 60721-3-4)	4K4H	
Topology	High frequency isolated	
Power Consumption at Night (mW)	< 50	
Inrush Current	9.8A peak@0.3ms	
Max. Inverter Backfeed Current to the Array (A)	0	
Standard		
Safety	IEC62109-1 / IEC62109-2 / IEC61727	
EMC	EN 61000-6-1 / EN 61000-6-2 / EN 61000-6-3	
Cetification	EN50549-1, VDE0126-1-1, VDE 4105, ABNT NBR 16149, ABNT NBR 16150, ABNT NBR 62116, UNE 206006 IN	